

British Standard Pipe Parallel – 60° Seat & Female Solid

British Standard Pipe Parallel (BSPP) Connection Types / Identification

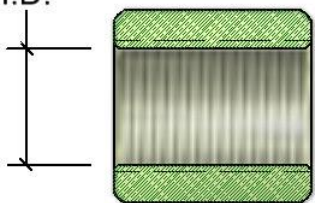
BSP threaded connections (and variations) are the most popular hydraulic connections in the world. BSP connections are divided into two main types: British Standard Pipe Parallel and British Standard Pipe Tapered.

Measurement Procedure

1. With calipers, measure the O.D. (outside diameter) of the Male threads or the I.D. (inside diameter) of the Female Threads.
2. Check the thread pitch with the thread pitch gauge.
3. Check the cone seat angle (30°/60°) with the seat angle gauge (for internal sealing – not port).
4. Compare measurements against chart.

| Dash Size | Nominal Size | Thread Pitch | Male Thread O.D. (inches) | | Female Thread I.D. (inches) | |
|-----------|--------------|--------------|---------------------------|---------|-----------------------------|---------|
| 2 | 1/8 | 28 | .375 | 3/8 | .344 | 11/32 |
| 4 | 1/4 | 19 | .531 | 17/32 | .469 | 7/16 |
| 6 | 3/8 | 19 | .656 | 21/32 | .594 | 19/32 |
| 8 | 1/2 | 14 | .813 | 13/16 | .750 | 3/4 |
| 10 | 5/8 | 14 | .906 | 29/32 | .813 | 13/16 |
| 12 | 3/4 | 14 | 1.031 | 1-1/32 | .969 | 15/16 |
| 16 | 1 | 11 | 1.344 | 1-15/16 | 1.219 | 1-13/16 |
| 20 | 1-1/4 | 11 | 1.656 | 1-21/32 | 1.531 | 1-17/32 |
| 24 | 1-1/2 | 11 | 1.875 | 1-7/8 | 1.781 | 1-25/32 |
| 32 | 2 | 11 | 2.334 | 2-11/32 | 2.219 | 2-7/32 |
| 40 | 2-1/2 | 8 | 2.950 | 2-61/64 | 2.860 | 2-55/64 |
| 48 | 3 | 8 | 3.460 | 3-29/64 | 3.360 | 3-23/64 |

FEMALE
THD.
I.D.



BSPP FEMALE SOLID

