



Malone Specialty Inc.
8900 East Ave., Mentor, Ohio 44060
Phone: 440-255-4200 ~ Fax: 440-255-0458
sales@malonespecialtyinc.com

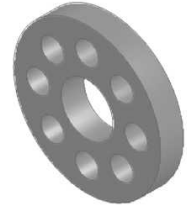
PRODUCT LINE - Flanges



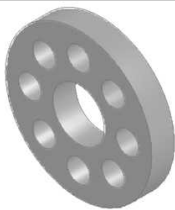
Flange - Weld Neck - Din Series 2633 - Pn16



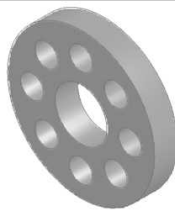
Flange - Weld Neck - Din Series 2635 - Pn40



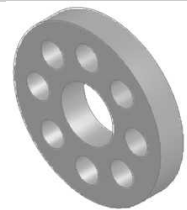
Flange - Slip-On Type - Din Series 2573 - Din Pn6



Flange - Slip-On Type - Din Series 2576 - Din Pn10



Flange - Slip-On Type - Din Series 2576 - Din Pn16



Flange - Slip-On Type - Din Series 2576 - Din Pn40



Flange - Flat Faced Slip-On Type - Jis B2220 - 5K



Flange - Flat Faced Slip-On Type - Jis B2220 - 10K



Flange - Flat Faced Slip-On Type - Jis B2220 - 16K



Flange - Flat Faced Slip-On Type - Jis B2220 - 20K



Flange - Blind Type - Din Series 2527 - Din Pn6



Flange - Blind Type - Din Series 2527 - Din Pn10



Flange - Blind Type - Din Series 2527 - Din Pn16



Flange - Blind Type - Din Series 2527 - Din Pn40



Flange - Blind Type - Jis B2220 - 5K



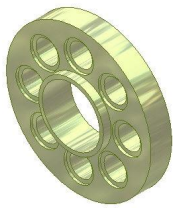
Flange - Blind Type - Jis B2220 - 10K



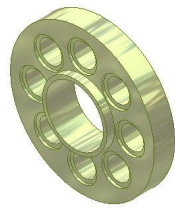
Flange - Blind Type - Jis B2220 - 16K



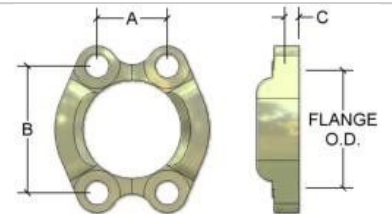
Flange - Blind Type - Jis B2220 - 20K



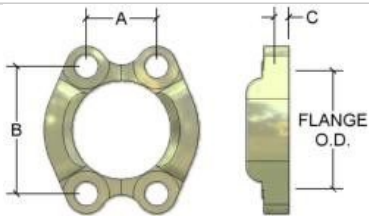
Flange - Slip-On Raise Face - Din Series 86029 - Din Pn10



Flange - Slip-On Raise Faced - Din Series 86030 - Din Pn16



Split Flange Clamps (Code 61)



Split Flange Clamps(Code 62)